

内牙不锈钢防水接头

- 产品材料:** 默认304, 可选316及316L, 密封件为EPDM橡胶
- 防护等级:** IP68
- 工作温度:** -40° ~ 105°, 短时120°
- 阻燃等级:** UL94V-2, 可定制V0级阻燃
- 产品性能:** 适用于外丝设备或镀锌钢管连接

•订购说明:

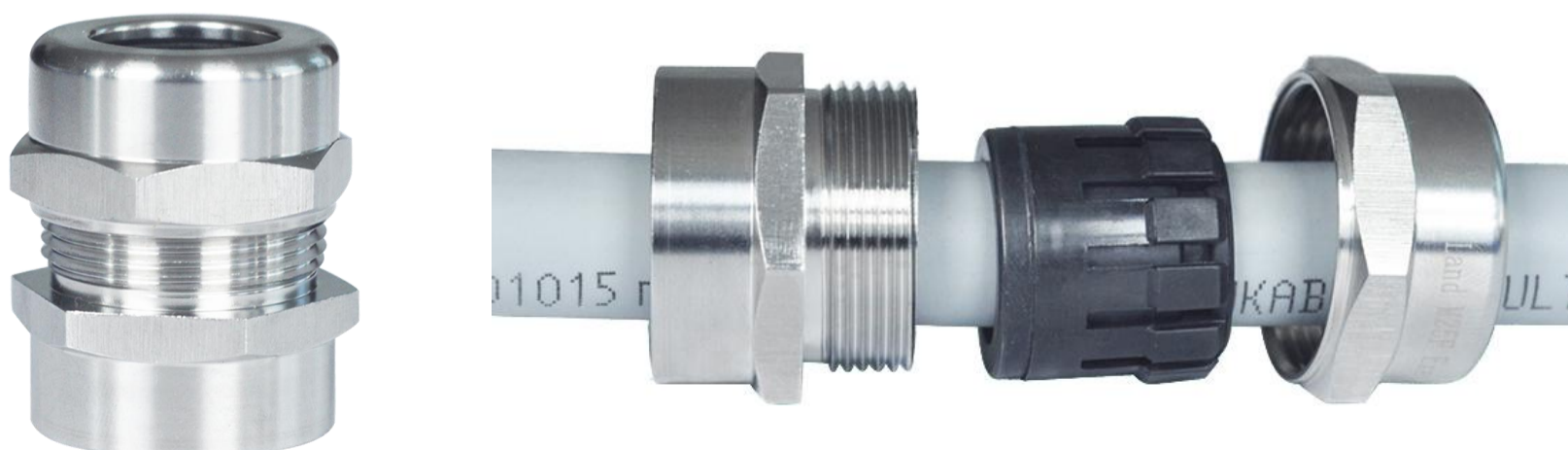
- 1) 默认发货三件套, 主体, 密封件和螺帽
- 2) 默认为304材质, 如需316, 请将型号后缀 "-SS" 改成 "S316"
- 3) 产品价格为 (人民币: 元/套, 美元: USD/set) ;



Internal stainless steel cable gland

- Product material:** default 304, optional 316 and 316L, seal is EPDM rubber
- Protection grade:** IP68
- Operating temperature:** - 40 °~105 °, short-term 120 °
- Flame retardant grade:** UL94V-2, customized V0 flame retardant
- Product performance:** suitable for external wire equipment or galvanized steel pipe connection
- Ordering instructions:**
 - 1) The default shipment is a three piece set, including the main body, seals and nuts
 - 2) The default is 304 material. If 316 is required, please change the model suffix "- SS" to "S316"
 - 3) The product price is (RMB: yuan/set, USD: USD/set);

产品应用场合/Application occasion



产品尺寸表/Product Size Table

蓝江产品型号	螺纹规格	电缆范围	螺纹长度	扳手尺寸
Product model	Thread size	Cable range	Thread length	Wrench Size
PN.	Metric	φ mm	GL mm	cap mm
MG12F-08-SS	M12×1.5	4~8	10	17
MG16F-10-SS	M16×1.5	6~10	11	22
MG18F-10-SS	M18×1.5	6~10	11	22
MG20F-14-SS	M20×1.5	8~14	13	26
MG20F-12-SS	M20×1.5	7~12	13	24
MG22F-14-SS	M22×1.5	8~14	13	26
MG24F-14-SS	M24×1.5	8~14	12	26
MG25F-18-SS	M25×1.5	13~18	13	32
MG30F-18-SS	M30×1.5/2.0	13~18	13	34
MG32F-25-SS	M32×1.5	18~25	13	40
MG40F-31-SS	M40×1.5/2.0	25~31	15	50
MG50F-41-SS	M50×1.5	33~41	15	60
MG63F-54-SS	M63×1.5	46~54	15	76
MG63F-44-SS	M63×1.5	36~44	15	65
G1/4-08-SS	G1/4	4~8	10	17
G3/8-10-SS	G3/8	6~10	10	22
G1/2-12-SS	G1/2	7~12	13	24
G3/4-18-SS	G3/4	13~18	13	32
G1-25-SS	G1	18~25	15	40
G1-1/4-31-SS	G1-1/4	25~31	15	50
G1-1/2-31-SS	G1-1/2	25~31	15	50
G2-44-SS	G2	36~44	15	65
NPT1/4-08-SS	NPT1/4	4~8	10	17
NPT3/8-10-SS	NPT3/8	6~10	10	22
NPT1/2-12-SS	NPT1/2	7~12	12	24
NPT3/4-18-SS	NPT3/4	13~18	13	32
NPT1-25-SS	NPT1	18~25	15	40
NPT1-1/4-31-SS	NPT1-1/4	25~31	15	50
NPT1-1/2-31-SS	NPT1-1/2	25~31	15	50
NPT2-44-SS	NPT2	36~44	15	65