

RGAD 组合不锈钢带锁紧管接头

•**产品材料:** 尼龙+不锈钢

•**防护等级:** IP65/IP68

•**工作温度:** -40° ~ 105°, 短时可达 120°

•**阻燃等级:** UL94V-2 阻燃

•**订购说明:**

- 1) 默认不配螺母, 如需请单独购买。
- 2) IP65 应对波纹管, IP68 应对电缆锁紧
- 3) 产品价格为 (人民币: 元/套, 美元: USD/set)



RGAD combined bellow joint with locking

•**Product material:** nylon+stainless steel

•**Protection grade:** IP65/IP68

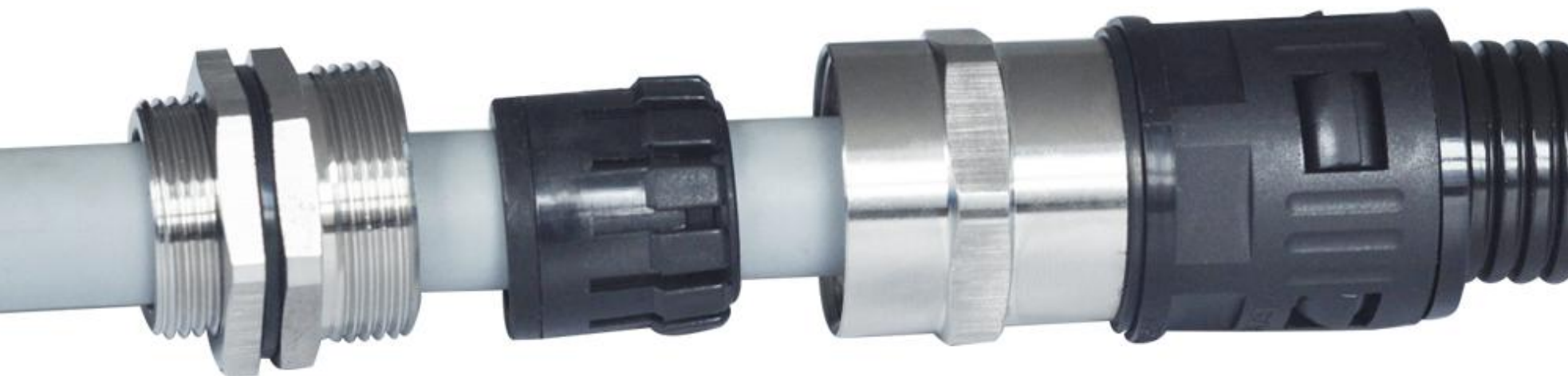
•**Working temperature:** - 40 °~105 °, up to 120 ° in a short time

•**Flame retardant grade:** UL94V-2 flame retardant

•**Ordering instructions:**

- 1) Standard nut, no need to contact customer service for instructions
- 2) IP65 shall be applied to corrugated pipe and IP68 shall be applied to cable locking
- 3) The product price is (RMB: yuan/set, USD: USD/set)

产品结构图/product mix



产品尺寸表/Product size

蓝江产品型号	螺纹规格	电缆范围	适配软管	螺纹长度	扳手尺寸
Product model	Thread size	Cable range	Adapter hose	Thread L	Wrench Size
PN.	Metric	φ mm	AD mm	GL mm	nut/cap mm
RGAD10-M12-06-SS	M12×1.5	3~6	AD10	7	15/14
RGAD10-M12-05-SS	M12×1.5	3~5.5	AD10	9	15/17
RGAD13-M12-08-SS	M12×1.5	4~8	AD13	9	15/17
RGAD13-M16-08-SS	M16×1.5	4~8	AD13	9.5	20/17
RGAD15.8-M16-07-SS	M16×1.5	4~7	AD15.8	9.5	20/21
RGAD15.8-M16-10-SS	M16×1.5	6~10	AD15.8	9.5	20/21
RGAD15.8-M18-07-SS	M18×1.5	4~7	AD15.8	9.5	21/21
RGAD15.8-M18-10-SS	M18×1.5	6~10	AD15.8	9.5	21/21
RGAD21.2-M20-14-SS	M20×1.5	8~14	AD21.2	12	24/26
RGAD18.5-M20-12-SS	M20×1.5	7~12	AD18.5	12	24/24
RGAD15.8-M20-09-SS	M20×1.5	5~9	AD15.8	12	24/24
RGAD21.2-M22-14-SS	M22×1.5	8~14	AD21.2	12	26/26
RGAD21.2-M24-14-SS	M24×1.5	8~14	AD21.2	10.5	28/26
RGAD28.5-M25-18-SS	M25×1.5	13~18	AD28.5	12	30/31
RGAD25.0-M25-18-SS	M25×1.5	13~18	AD25	12	30/31
RGAD21.2-M25-16-SS	M25×1.5	12~16	AD21.2	12	30/31
RGAD21.2-M25-14-SS	M25×1.5	8~14	AD21.2	12	30/31
RGAD28.5-M27-18-SS	M27×1.5	13~18	AD28.5	12	30/31
RGAD28.5-M30-18-SS	M30×1.5	13~18	AD28.5	12.5	34/31
RGAD34.5-M32-25-SS	M32×1.5	18~25	AD34.5	12.5	38/40
RGAD28.5-M32-18-SS	M32×1.5	13~18	AD28.5	12	38/31
RGAD34.5-M36-25-SS	M36×2.0	18~25	AD34.5	13	42/40
RGAD42.5-M40-31-SS	M40×1.5	25~31	AD42.5	14	48/50
RGAD34.5-M40-25-SS	M40×1.5	18~25	AD34.5	14	48/50
RGAD54.5-M50-41-SS	M50×1.5	33~41	AD54.5	15	58/60
RGAD54.5-M63-44-SS	M63×1.5	36~44	AD54.5	15	71/65

产品尺寸表/Product size

蓝江产品型号	螺纹规格	电缆范围	建议开孔	螺纹长度	扳手尺寸
Product model	Thread size	Cable range	Opening size	Thread L	Wrench Size
PN.	G(PF)	mm	mm	mm	nut/cap mm
RGAD10-G1/4-05-SS	G1/4	3 ~ 5.5	AD10	9	17/17
RGAD13-G1/4-08-SS	G1/4	4 ~ 8	AD13	9	17/17
RGAD15.8-G3/8-10-SS	G3/8	6 ~ 10	AD15.8	9.5	21/21
RGAD15.8-G1/2-09-SS	G1/2	5 ~ 9	AD15.8	12	24/24
RGAD18.5-G1/2-12-SS	G1/2	7 ~ 12	AD18.5	12	24/24
RGAD21.2-G1/2-14-SS	G1/2	8 ~ 14	AD21.2	12	24/26
RGAD21.2-G3/4-16-SS	G3/4	12 ~ 16	AD21.2	12	30/31
RGAD25-G3/4-18-SS	G3/4	13 ~ 18	AD25	12	30/31
RGAD28.5-G3/4-18-SS	G3/4	13 ~ 18	AD28.5	12	30/31
RGAD34.5-G1-25-SS	G1	18 ~ 25	AD34.5	15	38/40
RGAD42.5-G1-1/4-31-SS	G1-1/4	25 ~ 31	AD42.5	15	48/50
RGAD54.5-G1-1/2-41-SS	G1-1/2	33 ~ 41	AD54.5	15	55/60
RGAD42.5-G1-1/2-31-SS	G1-1/2	25 ~ 31	AD42.5	15	55/50
RGAD54.5G2-44-SS	G2	36 ~ 44	AD54.5	15	71/65
RGAD10-NPT1/4-05-SS	NPT1/4	3 ~ 5.5	AD10	9	17/17
RGAD13-NPT1/4-08-SS	NPT1/4	4 ~ 8	AD13	9	17/17
RGAD15.8-NPT3/8-10-SS	NPT3/8	6 ~ 10	AD15.8	9.5	21/21
RGAD15.8-NPT1/2-09-SS	NPT1/2	5 ~ 9	AD15.8	12	24/24
RGAD18.5-NPT1/2-12-SS	NPT1/2	7 ~ 12	AD18.5	12	24/24
RGAD21.2-NPT1/2-14-SS	NPT1/2	8 ~ 14	AD21.2	12	24/26
RGAD21.2-NPT3/4-16-SS	NPT3/4	12 ~ 16	AD21.2	12	30/31
RGAD25-NPT3/4-18-SS	NPT3/4	13 ~ 18	AD25	12	30/31
RGAD28.5-NPT3/4-18-SS	NPT3/4	13 ~ 18	AD28.5	12	30/31
RGAD34.5-NPT1-25-SS	NPT1	18 ~ 25	AD34.5	15	38/40
RGAD42.5-NPT1-1/4-31-SS	NPT1-1/4	25 ~ 31	AD42.5	15	48/50
RGAD54.5-NPT1-1/2-41-SS	NPT1-1/2	33 ~ 41	AD54.5	15	55/60
RGAD42.5-NPT1-1/2-31-SS	NPT1-1/2	25 ~ 31	AD42.5	15	55/50
RGAD54.5-NPT2-44-SS	NPT2	36 ~ 44	AD54.5	15	71/65